



Volume 40

Issue 4

April 2023

**Then He said to them, “Follow Me, and I will make you fishers of men.”
Matthew 4:19 (NKJV)**

Becoming A Christian Pharmacy Leader

No matter what position a pharmacist holds in our profession, he or she will likely be someone’s superior, ranging from overseeing the work of a couple pharmacy technicians or interns to leading a large professionally and personally diverse team or company. While how to care for patients is extensively included, how to effectively lead a pharmacy team is rarely covered within pharmacy school curricula. These are generally considered soft skills that are learned through experience over time. As Christian pharmacists, we are uniquely positioned to align our leadership styles with our Christian values. We will explore a few ways a Christian pharmacist can lead other people in profound ways.

The first thing to start with is love. Loving others is the foundation for building good relationships. This is even true in the workplace. A Christian pharmacist should love their team as Christ loves them. Showing the love of Jesus will have profound impacts on those around you.

Love is patient, love is kind. It does not envy, it does not boast, it is not proud. It does not dishonor others, it is not self-seeking, it is not easily angered, it keeps no record of wrongs. Love does not delight in evil but rejoices with the truth. It always protects, always trusts, always hopes, always perseveres. Love never fails. 1 Corinthians 13:4-8a (NIV)

Secondly, the exercise of praying for your team and for your superiors is an excellent practice to develop. It helps to remind you every time you do so that your team members are broken people too, just like us all. One thing that I’ve been doing is picking one person each day to pray for on my commute to work. With a team of 75, I end up praying for everyone on the team about four times per year (I am human and forget some days!). I typically pray for their success, that they demonstrate compassion with patients and colleagues, and that we will have a good working relationship in which they feel comfortable talking to me about any concerns they have and anything else that is specific to the person.

Therefore confess your sins to each other and pray for each other so that you may be healed. The prayer of a righteous person is powerful and effective. James 5:16

Lastly, being humble, gentle, patient, kind, and filled with compassion is of great importance and value at the workplace. Demonstrating these characteristics can not only help you gain the respect of your team but also encourage others to show these actions as well.

Therefore, as God's chosen people, holy and dearly loved, clothe yourselves with compassion, kindness, humility, gentleness and patience. Colossians 3:12

No one gets all these right 100% of the time. We are all on a journey to grow closer to Christ. I encourage you to continue to make Christ more and more known within your leadership activities.

Jordan T. Daniel, PharmD, CPFI Treasurer
Attleboro, MA

[Prayer Wall](#) | [Outreach Opportunities](#) | [Student Newsletter - Summer/Fall 2022](#)



[REGISTER TODAY!](#)



Registration Closes Soon!

**2023 CPFI Annual Conference &
National Student Retreat**

Lake Junaluska Conference & Retreat Center
91 N Lakeshore Drive
Lake Junaluska, NC 28745
National Student Retreat May 24 to 28
Annual Conference May 25 to 28
<https://lakejunaluska.com/>
Registration opens January 16, 2023
Early Registration Ends March 13, 2023
Registration Closes April 17, 2023

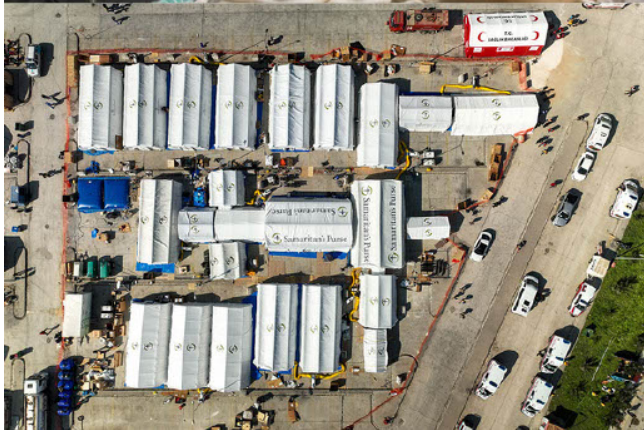
[Learn More & Register](#)



Disaster Assistance Response Team (DART)



Samaritan's Purse is seeking to hire clinical pharmacists to serve with the **DART**, a roster of on-call staff members who respond at a moment's notice to disasters worldwide – serving as the hands and feet of Jesus in remote locations.



You can take a look at our recent work in this [video](#), and you can find more information and links to apply on our website.

[Samaritan's Purse - Learn More & Apply](#)

[Access Archives for CPFI Publications](#)

The Faith Script

Christianity & Pharmacy

National Student Council Newsletter



CPFI elections open April 17th - be sure to check your in-box and vote!

Not getting mail from CPFI?

Log on to your member profile and make sure your 'preferred' address is current. Your preferred address is the one we use for mailing your annual statement of giving, the Christianity & Pharmacy journal, and reminders & promotions for our annual conference. Keeping your address current also saves your organization time and money! Thank you!



Join us Sunday, April 16, 2023 at 5:00 PM ET

The CPFI Past Presidents Committee was asked to implement a prayer ministry on behalf of CPFI. In March 2020, we started a weekly Prayer Meeting on Sunday evening at 5 p.m. ET, initially to pray about Covid-19 needs. **We are meeting monthly now on the third Sunday.** If you would like an invitation, e-mail Nena Lindrose at Office@cpfi.org. She will send a reminder e-mail with instructions on how to join and some suggested prayer concerns during the week prior to the meeting. We hope you will join us **Sunday, April 16, 2023**, for our next session. By signing up you are only committing to participate when able and praying out loud is voluntary.

Fred Eckel, Board Member

Join

Support CPFI with your membership!

Renew

rightnow MEDIA



RightNow Media is a tool that can help you live out your faith in every area of your life- at home, at work, and in your community.

CPFI has unlimited access to RightNow Media-the **world's largest streaming library** of video Bible study resources. This extensive library has more than 20,000 videos taught by leaders like **Francis Chan, Jennie Allen, J.D. Greear, Dr. Tony Evans, and many more.** These Bible study videos can be used as part of a group study or for personal devotions, and many series include free discussion guides and handouts.

Sign-up today for FREE! [click here](#) or text RIGHTNOW CPFI to 41411. **You must be a member of CPFI to sign up.**

[Learn more about The 1% Group](#)

[Learn more about Power Hour Gift Club](#)

Give Now

Giving Opportunities

- **1% Group Annual Gift** (membership renewal may or may not be included)
- **1% Group Recurring Monthly Gift** (includes membership renewal)
- **Power Hour Recurring Monthly Gift** (includes membership renewal)
- **Gift** (not recurring)



Christian Pharmacists Fellowship International
P.O. Box 1154
Bristol, TN 37621-1154
Phone: 423-844-1043
office@cpfi.org

Connect with Us:

[Facebook](#)

[Twitter](#)

[LinkedIn](#)