



I have loved you with an everlasting love. I have drawn you with unfailing kindness. Jeremiah 31:3 (b) (NIV)

As calendars flip to February, thoughts likely turn to love. Although the Bible is full of stories about love, I would venture a guess that 2 Samuel is not high on anyone's list of love-themed biblical books. Second Samuel has been on my mind, however, as I recently wrapped up a Bible study on the life of King David. We are likely more familiar with the Greek words for love: phileo, eros, and agape, but the Hebrew word "ahav" is used many times in 2 Samuel.

Chapter 1 begins with David learning of Jonathan's death. David spoke of brotherly love when he said, *"I grieve for you, Jonathan my brother; you were very dear to me. Your love for me was wonderful...."* 2 Samuel 1:26 (NIV). Another example of brotherly love is found in 2 Samuel 15:19-20 when David fled from his conspiring son Absalom. Ittai the Gittite declared his commitment to stay with David, but David discouraged him by saying, *"But as for you, go back and take your men with you. May genuine loyal love protect you!"* (NET). Despite David's suggestion that Ittai cut bait and run, Ittai chose love for David over fear.

Second Samuel contains stories of erotic love as well. Perhaps the most (in)famous story tells of David's affair with Bathsheba in chapter 11. And then, in chapter 13, David's first-born, Amnon, driven by lust, raped his half-sister, Tamar. *"Then Amnon hated her exceedingly, so that the hatred with which he hated her was greater than the love with which he had loved her."* 2 Samuel 13:15 (NKJV)

As I thought about David's response to Amnon's action and his overall parenting style, that led me to think about familial love. Also known as "storge," this love has been described as an unconditional type of love between a parent and child. The only unconditional love, though, is agape love. This love comes from God. When Solomon was born, we read, *"The Lord loved the child and sent word through Nathan the prophet that they should name him Jedidiah (which means "beloved of the Lord"), as the Lord had commanded."* 2 Samuel 12:24-25 (NLT).

The Lord loved Solomon, and He loves us, too. *"For God so loved the world, that He gave His only Son, so that everyone who believes in Him will not perish, but have eternal life."* (John 3:16, NASB). Although we can never love God the way He loves us, we can follow the words of His Son, Jesus Christ, who says, *"You shall love the Lord your God with all your heart, and with all your soul, and with all your mind."* This is the great and foremost commandment. Matthew 22:38 (NASB).

As you think about love this month, consider the many great (and poor) examples God has given us about love. Above all, may we follow the words of Our Savior as we demonstrate love to others: *"You shall love your neighbor as yourself."* Matthew 22:39 (NASB).

Susan M. Smith, BS, PharmD, BCPS
Wingate, NC

The Following Global Health Outreach (GHO) trips need pharmacists. For more information visit <https://cmda.org/global-health-outreach/gho-find-a-trip/>

Nicaragua - March 8-16, 2025

El Salvador - March 15-23, 2025

Nicaragua - April 5-13, 2025

Ecuador - May 31-June 8, 2025

Nicaragua - June 14-22, 2025

Dominican Republic - June 14-22, 2025

**CPFI Prayer Breakfast at the APhA 2025 Annual Meeting & Exposition
Nashville, Tennessee**

Title: Habits of the Heart: Cultivating Grace and Guarding Against Sin

Sunday, March 23, 2025

7:45 am to 8:30 AM

Location: Music City Center - RM 209A

Sign up with APhA when you register for the conference!

Speaker: Andrew Straw, PharmD, BCADM

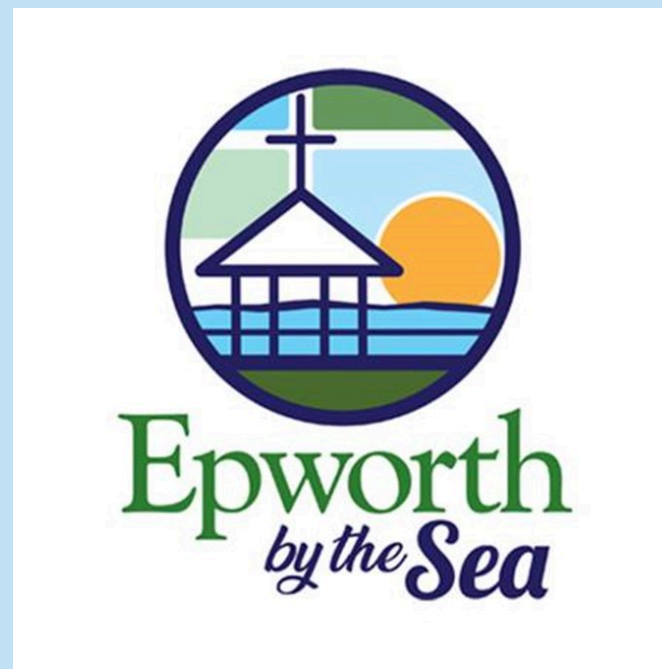
Associate Professor of Pharmacy Practice, Vice Chair, Cedarville University

As Christian pharmacists, our habits and attitudes toward patients reflect the state of our hearts and shape how we show Christ's love. The Gospel empowers us to see every patient as a person made in God's image, extending grace and empathy even in challenging situations.

<https://aphameeting.pharmacist.com/General-Info>

Connect with us on social media!
(links below)

Outreach Opportunities | NSC Newsletter - Fall/Winter 2024 |



CPFI 2025 Annual Conference & National Student Retreat

Epworth-by-the-Sea

100 Arthur J. Moore Drive
St. Simons Island, GA 31522

Schedule at a glance

National Student Retreat: May 28 to June 1, 2025

Annual Conference: May 29 to June 1, 2025

[Pharmacists Register Now](#)

[Students Register Now](#)

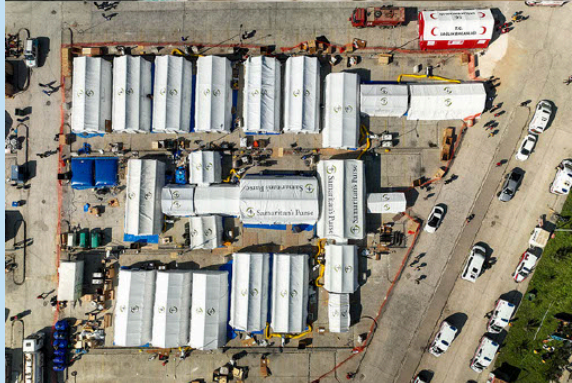
A wonderful member donor will cover the cost of your registration, room and meals this year. This gift is available to pharmacist members, their spouse and children, and student members and will be available until our room block is filled. **Space is limited so register early!**
Travel expenses and incidentals are not included.



Disaster Assistance Response Team (DART)



Samaritan's Purse is seeking to hire clinical pharmacists to serve with the **DART**, a roster of on-call staff members who respond at a moment's notice to disasters worldwide – serving as the hands and feet of Jesus in remote locations.



You can take a look at our recent work in this [video](#), and you can find more information and links to apply on our website.

[Samaritan's Purse - Learn More & Apply](#)

Access Archives for CPFI Publications

The Faith Script

Join us for prayer!

Sunday, February 16, 2025 at 5:00 pm ET



Agenda

The CPFI Past Presidents Committee was asked to implement a prayer ministry on behalf of CPFI. In March 2020, we started a weekly Prayer Meeting on Sunday evening at 5 p.m. ET, initially to pray about Covid-19 needs. **We are meeting monthly now on the third Sunday.** If you would like an invitation, e-mail Nena Lindrose at Office@cpfi.org. She will send a reminder e-mail with instructions on how to join and some suggested prayer concerns during the week prior to the meeting. We hope you will join us **Sunday, February 16, 2025** for our next session. By signing up you are only committing to participate when able and praying out loud is voluntary.
Fred Eckel, Director Emeritus

Join or Renew

Support CPFI with your membership!

rightnow MEDIA



RightNow Media is a tool that can help you live out your faith in every area of your life - at home, at work, and in your community.

CPFI now has a custom library set up for our members! Log in to your Rightnow Media account and from the homepage click on the CPFI custom library tab in the upper right corner of the screen. This will provide suggestions for videos on a variety of topics.

Sign-up today for FREE! [click here](#) or text RIGHTNOW CPFI to 49775. **You must be a member of CPFI to sign up.**

Learn more about The 1%
Group

Learn more about Power
Hour Gift Club

Give Now

Giving Opportunities

- **1% Group Annual Gift** (membership renewal may or may not be included)
- **1% Group Recurring Monthly Gift** (includes membership renewal)
- **Power Hour Recurring Monthly Gift** (includes membership renewal)
- **Gift** (not recurring)



Christian Pharmacists Fellowship International
P.O. Box 1154
Bristol, TN 37621-1154
Phone: 423-844-1043
office@cpfi.org

Connect with Us:

[Facebook](#)

[Instagram](#)

[LinkedIn](#)